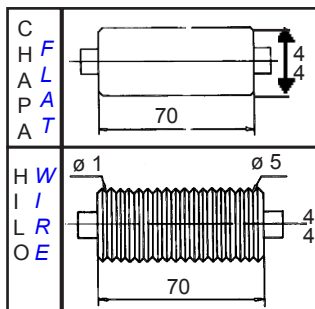


# LAMINADORES A MOTOR DOBLE CABEZAL

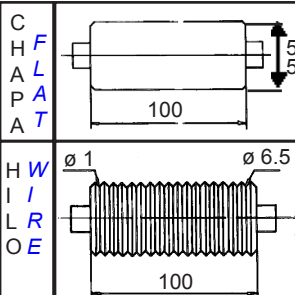
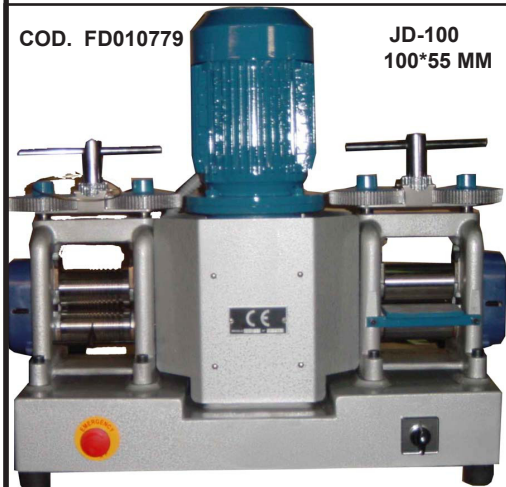
## MOTOR DRIVEN ROLLING MILL DOUBLE HEAD

Cod. FD010651  
Mod. JD-70  
MOTOR 1 HP

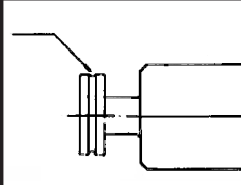


COD. FD010779

JD-100  
100\*55 MM



R  
O  
U  
L  
E  
T  
T  
E  
S

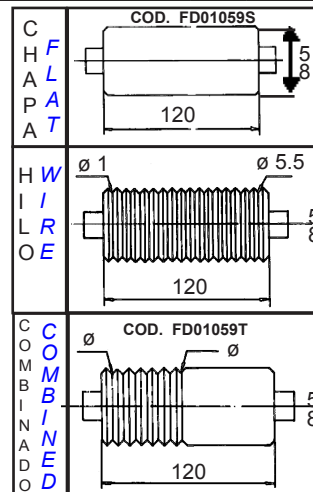


NORMAL  
mm.  
5.5x1  
4.5x1  
3x0.9  
2.5x0.8  
2x0.7

Solo en cabezales rodillos hilo.  
Only on heads with wire rolls.

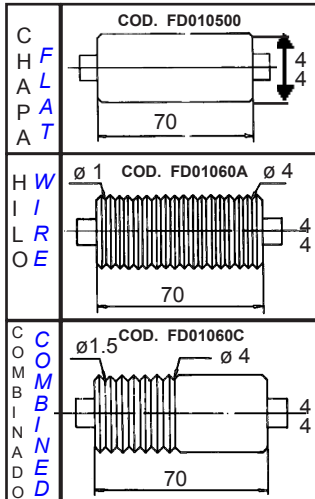
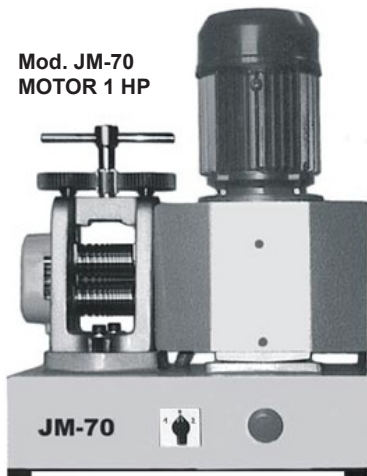
Rodillos	Rolls	mm.	70x44
Apertura rodillos	Max. opening of rolls	mm.	5
Peso	Weight	kgs.	70/85
Dimensiones	Dimensions	cms.	63x36x62

Motor 1,5 HP
Apertura - Opening 6 mm.
Con ruletas - With roulettes
Kgs. 90
Dimens. Mm. 650x360x680



C  
O  
M  
B  
I  
N  
A  
D  
O

Mod. JM-70  
MOTOR 1 HP

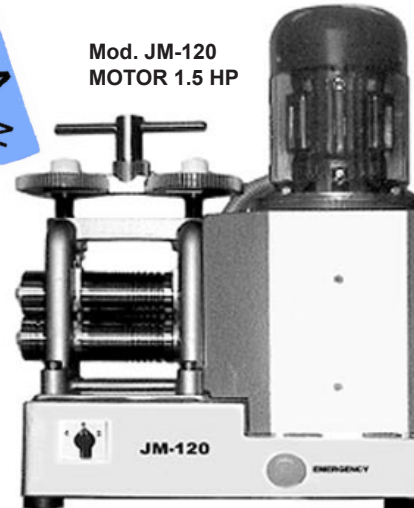


C  
O  
M  
B  
I  
N  
A  
D  
O

Apertura rodillos	Max. opening of rolls	mm.	5
Peso	Weight	kgs.	35/50
Dimensiones	Dimensions	cms.	36x26x53



Mod. JM-120  
MOTOR 1.5 HP



Apertura rodillos	Max. opening of rolls	mm.	10 -12
Pesos	Weight	kgs.	85/110
Dimensiones	Dimensions	cms.	75x36x66

# HISPANA

de Maquinaria, S.A.

Tel. +34 93 3091707 Fax. + 34 93 3090702

e-mail: hispana@hispanaspain.com

internet: http://www.hispanaspain.com

C/ Can Cuiàs, 24-26 - Pol.Ind. Can Cuiàs, nave 20/1  
Montcada i Reixac 08110 - Barcelona - España (Spain)